

TH1

4 Bedrooms
6 Bathrooms
Powder Room
Private Mews Entrance
Private Elevator
Dining Area
Master Suite with Sitting Room
Rooftop Study with Wet Bar
Fireplace
Private Roof Terrace

Interior: 4,228 SF (393 SM)
Main: 1,239 SF (115 SM)
Second: 1,281 SF (119 SM)
Third: 1,281 SF (119 SM)
Penthouse: 427 SF (40 SM)
Cellar (Not Included): 1,281 SF (119 SM)

East and South Exposure

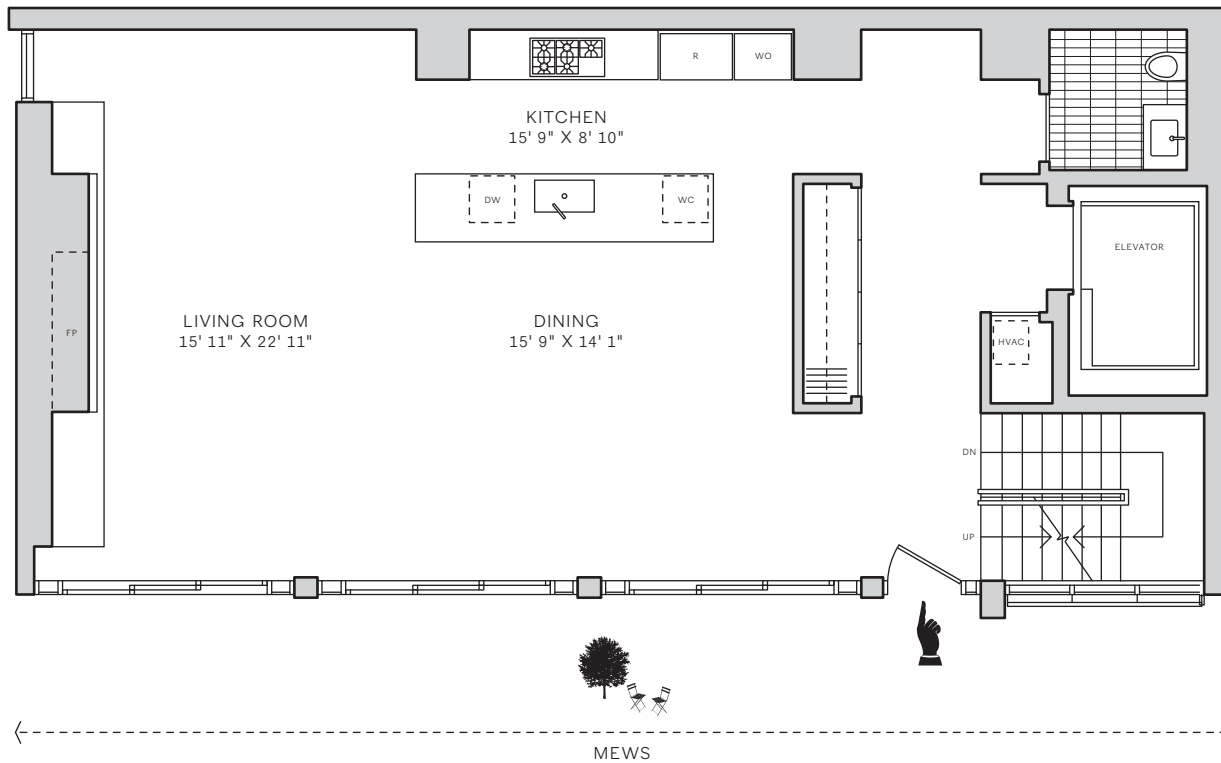
**Property: 421 Hudson Street
New York, NY 10014**

Designed by workshop/apd LLC
Developed by AGBH Printing House
Holdings, LLC

Exclusive Marketing and Sales Agent:
Corcoran Sunshine Marketing Group

Phone: 212.675.0421
printinghousewestvillage.com

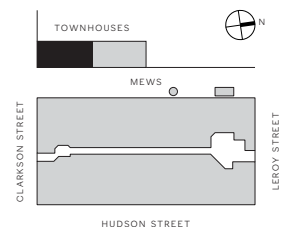
Main Level



The Printing House West Village



The method of computation of the square footage and number of rooms of each unit is more particularly described in Section 3 of the 32nd Amendment to the Offering Plan. Cellar space is not treated as livable space and is not included in the floor area. All dimensions are approximate and subject to normal construction variances and tolerances. The complete offering terms are in an offering plan available from the Sponsor. FILE NO. CD 86-0354.



TH1

4 Bedrooms
6 Bathrooms
Powder Room
Private Mews Entrance
Private Elevator
Dining Area
Master Suite with Sitting Room
Rooftop Study with Wet Bar
Fireplace
Private Roof Terrace

Interior: 4,228 SF (393 SM)

Main: 1,239 SF (115 SM)
Second: 1,281 SF (119 SM)
Third: 1,281 SF (119 SM)
Penthouse: 427 SF (40 SM)
Cellar (Not Included): 1,281 SF (119 SM)

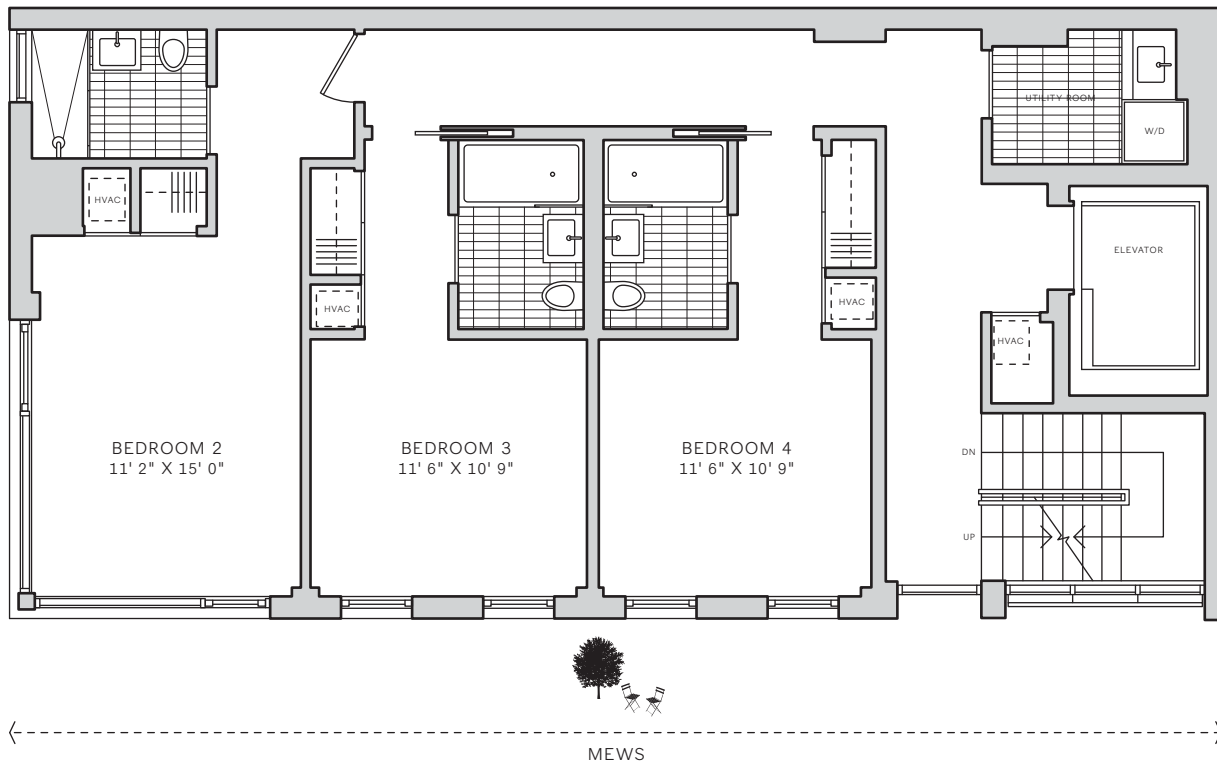
East and South Exposure

Property: 421 Hudson Street
New York, NY 10014

Designed by workshop/apd LLC
Developed by AGBH Printing House
Holdings, LLC
Exclusive Marketing and Sales Agent:
Corcoran Sunshine Marketing Group

Phone: 212.675.0421
printinghousewestvillage.com

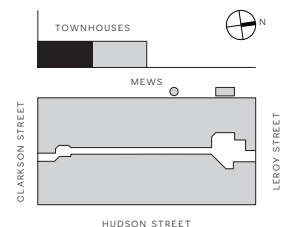
Second Level



The Printing House West Village



The method of computation of the square footage and number of rooms of each unit is more particularly described in Section 3 of the 32nd Amendment to the Offering Plan. Cellar space is not treated as livable space and is not included in the floor area. All dimensions are approximate and subject to normal construction variances and tolerances. The complete offering terms are in an offering plan available from the Sponsor. FILE NO. CD 86-0354.



TH1

4 Bedrooms
6 Bathrooms
Powder Room
Private Mews Entrance
Private Elevator
Dining Area
Master Suite with Sitting Room
Rooftop Study with Wet Bar
Fireplace
Private Roof Terrace

Interior: 4,228 SF (393 SM)
Main: 1,239 SF (115 SM)
Second: 1,281 SF (119 SM)
Third: 1,281 SF (119 SM)
Penthouse: 427 SF (40 SM)
Cellar (Not Included): 1,281 SF (119 SM)

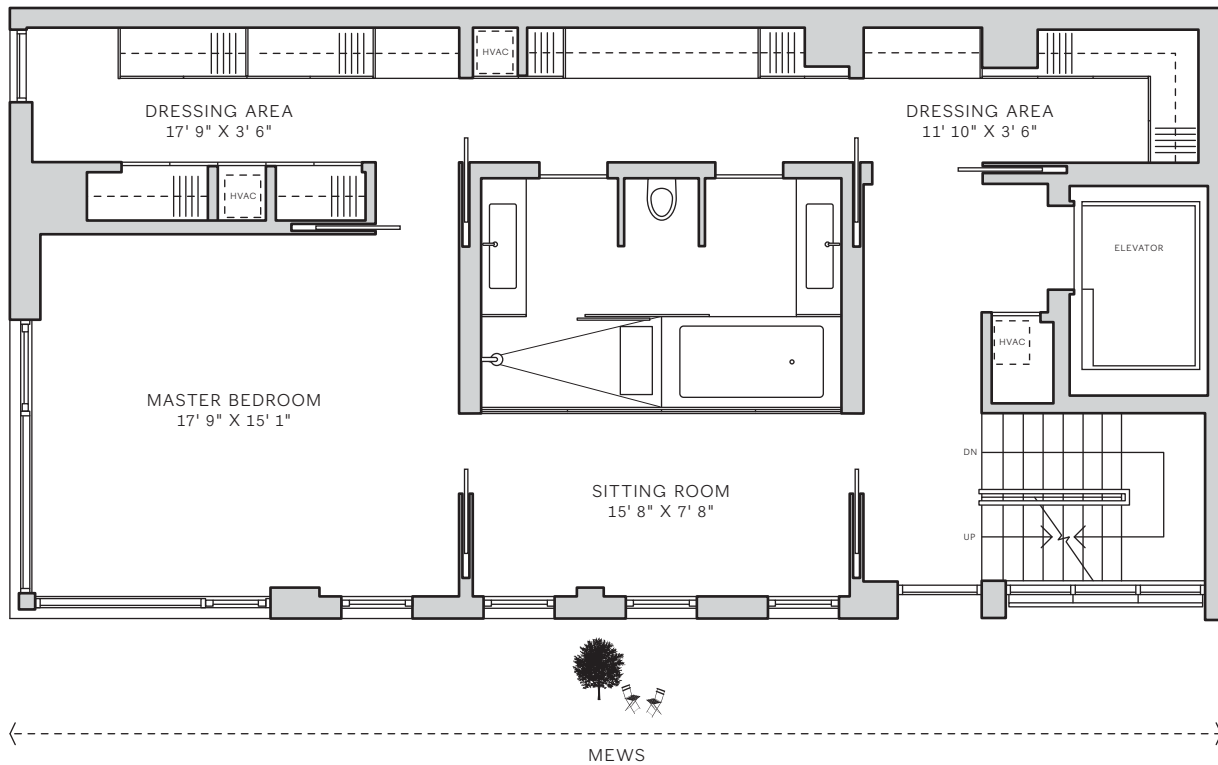
East and South Exposure

**Property: 421 Hudson Street
New York, NY 10014**

Designed by workshop/apd LLC
Developed by AGBH Printing House
Holdings, LLC
Exclusive Marketing and Sales Agent:
Corcoran Sunshine Marketing Group

Phone: 212.675.0421
printinghousewestvillage.com

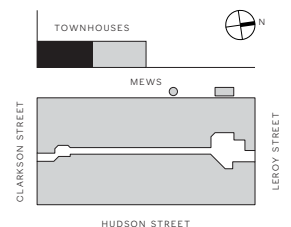
Third Level



The Printing House West Village



The method of computation of the square footage and number of rooms of each unit is more particularly described in Section 3 of the 32nd Amendment to the Offering Plan. Cellar space is not treated as livable space and is not included in the floor area. All dimensions are approximate and subject to normal construction variances and tolerances. The complete offering terms are in an offering plan available from the Sponsor. FILE NO. CD 86-0354.



TH1

4 Bedrooms
6 Bathrooms
Powder Room
Private Mews Entrance
Private Elevator
Dining Area
Master Suite with Sitting Room
Rooftop Study with Wet Bar
Fireplace
Private Roof Terrace

Interior: 4,228 SF (393 SM)

Main: 1,239 SF (115 SM)
Second: 1,281 SF (119 SM)
Third: 1,281 SF (119 SM)
Penthouse: 427 SF (40 SM)
Cellar (Not Included): 1,281 SF (119 SM)

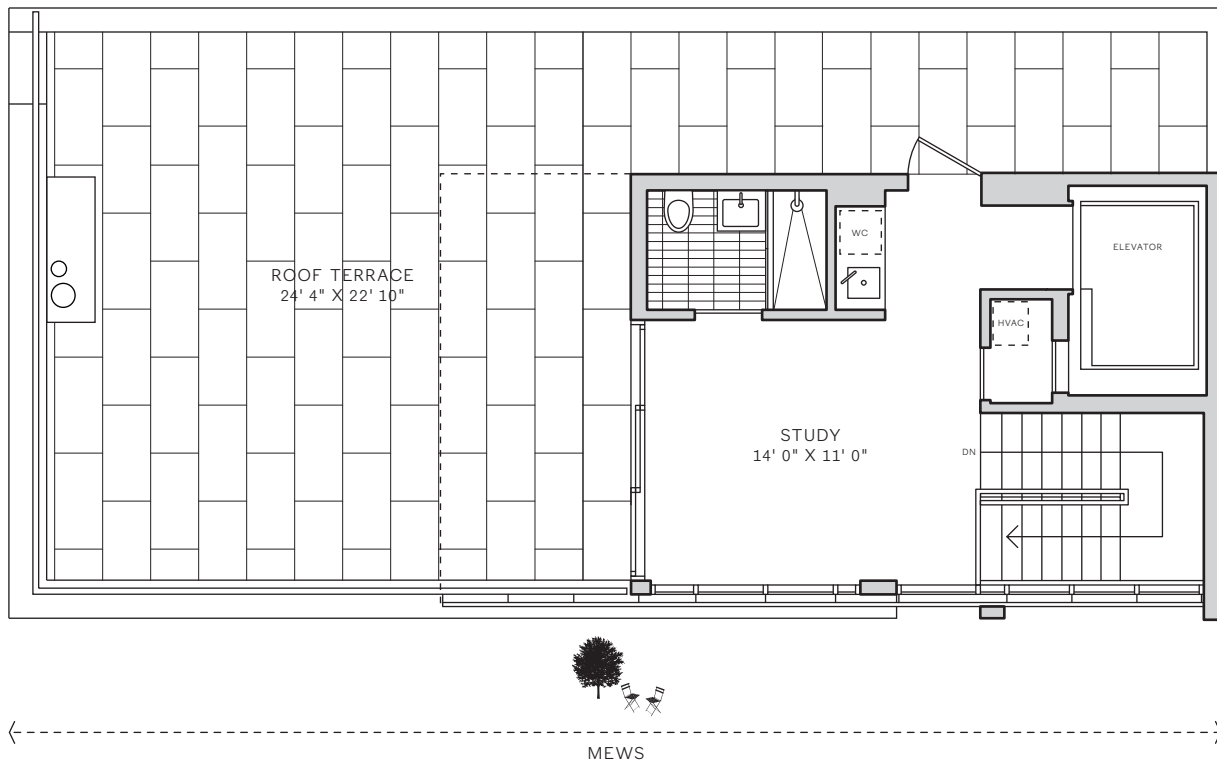
East and South Exposure

Property: 421 Hudson Street
New York, NY 10014

Designed by workshop/apd LLC
Developed by AGBH Printing House
Holdings, LLC
Exclusive Marketing and Sales Agent:
Corcoran Sunshine Marketing Group

Phone: 212.675.0421
printinghousewestvillage.com

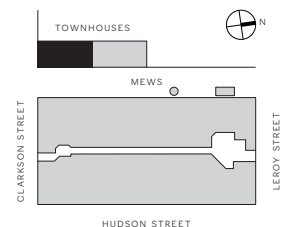
Penthouse Level



The Printing House West Village



The method of computation of the square footage and number of rooms of each unit is more particularly described in Section 3 of the 32nd Amendment to the Offering Plan. Cellar space is not treated as livable space and is not included in the floor area. All dimensions are approximate and subject to normal construction variances and tolerances. The complete offering terms are in an offering plan available from the Sponsor. FILE NO. CD 86-0354.



TH1

4 Bedrooms
6 Bathrooms
Powder Room
Private Mews Entrance
Private Elevator
Dining Area
Master Suite with Sitting Room
Rooftop Study with Wet Bar
Fireplace
Private Roof Terrace

Interior: 4,228 SF (393 SM)

Main: 1,239 SF (115 SM)
Second: 1,281 SF (119 SM)
Third: 1,281 SF (119 SM)
Penthouse: 427 SF (40 SM)
Cellar (Not Included): 1,281 SF (119 SM)

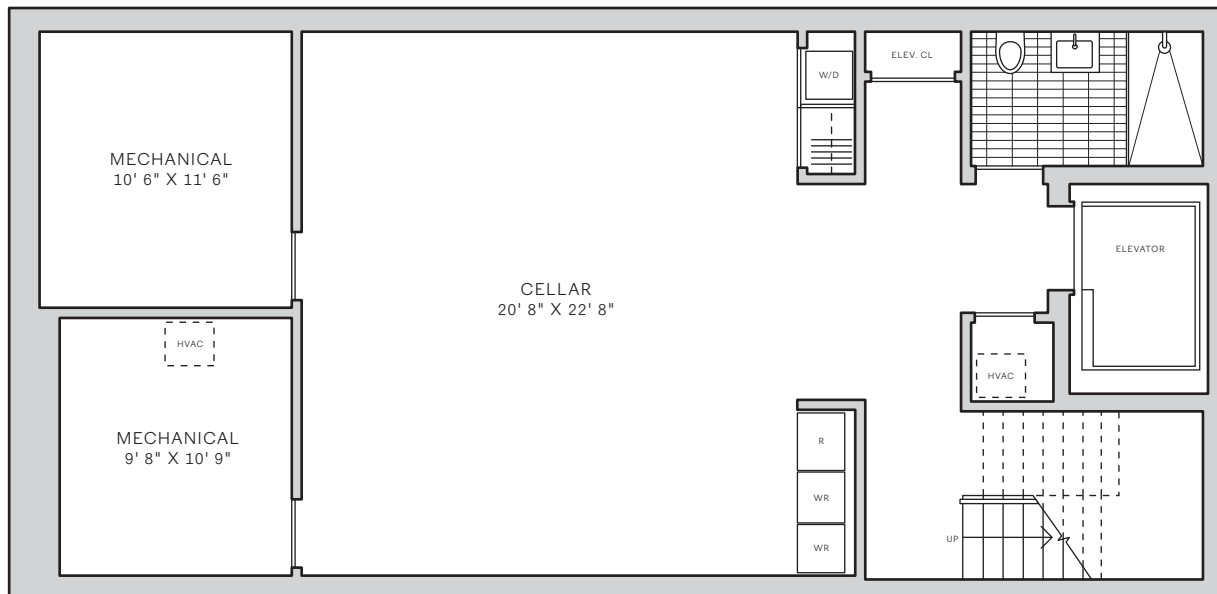
East and South Exposure

Property: 421 Hudson Street New York, NY 10014

Designed by workshop/apd LLC
Developed by AGBH Printing House
Holdings, LLC
Exclusive Marketing and Sales Agent:
Corcoran Sunshine Marketing Group

Phone: 212.675.0421
printinghousewestvillage.com

Cellar Level



The Printing House West Village



The method of computation of the square footage and number of rooms of each unit is more particularly described in Section 3 of the 32nd Amendment to the Offering Plan. Cellar space is not treated as livable space and is not included in the floor area. All dimensions are approximate and subject to normal construction variances and tolerances. The complete offering terms are in an offering plan available from the Sponsor. FILE NO. CD 86-0354.

